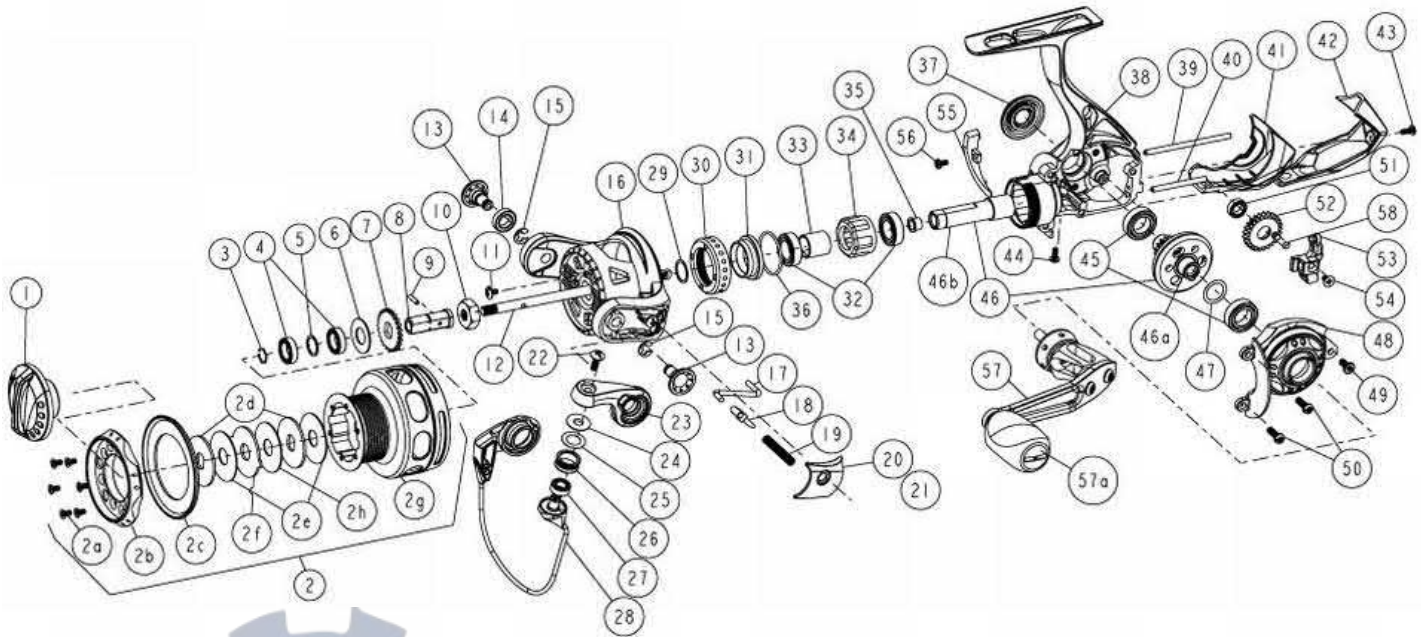


QUANTUM[®]

Exo EX30PTi



Quantum Exo EX30PTi Spinning Reel Part List

| Key # | Description | Qty. | Part No. | Key # | Description | Qty. | Part No. |
|-------|---------------------------|------|-----------|-------|-------------------------------------|------|------------|
| 1 | Drag Knob Assembly | 1 | VAA332-02 | 31 | Clutch Bearing Adapter | 1 | UAA190-01 |
| 2 | Spool Assembly | 1 | VAA321-51 | 32 | Pinion Ball Bearing | 2 | TW058-03 |
| 2D | Drag Washer "D" | 2 | UAA080-01 | 33 | Sleeve | 1 | UAA139-01 |
| 2E | Drag Washer "B" | 3 | UAA033-01 | 34 | One Way Clutch - SEE ITEM # 60 | 1 | UAA063-01 |
| 2F | Drag Washer "A" | 1 | UAA081-01 | 35 | Pinion Bushing | 1 | BAA213-02 |
| 3 | Retainer Ring | 1 | UAA038-01 | 36 | O-Ring | 1 | VAA101-01 |
| 4 | Spool Ball Bearing | 2 | CH027-01 | 37 | Dust Cap | 1 | UAA054-01 |
| 5 | Spool Ball Bearing Washer | 1 | UAA076-01 | 38 | Body Assembly | 1 | UAA301-03 |
| 6 | Spool Adjust Washer | 1 | UAA030-01 | 39 | O/S Guide Pin "A" | 1 | UAA093-02 |
| 7 | Clicker Gear | 1 | UAA037-01 | 40 | O/S Guide Pin "B" | 1 | UAA098-02 |
| 8 | Shaft Drag Adapter | 1 | UAA117-01 | 41 | Body Rear Cap "A" | 1 | VAA141-01 |
| 9 | Adapter Pin | 1 | UAA134-01 | 42 | Body Rear Cap "B" | 1 | VAA140-01 |
| 10 | Rotor Nut | 1 | BAA006-02 | 43 | Rear Cap Screw "A" - M2 x 6mm | 1 | UAA123-03 |
| 11 | Rotor Nut Lock Screw | 1 | UAA094-02 | 44 | Rear Cap Screw "B" - M2 x 4mm | 1 | UAA123-04 |
| 12 | Main Shaft | 1 | UAA015-02 | 45 | Drive Gear Bearing | 2 | TW058-03 |
| 13 | Rotor Arm Sleeve | 2 | UAA042-02 | 46 | Drive Gear Kit | 1 | UAA412-01 |
| 14 | Ball Bearing | 1 | BAA158-01 | 46a | Drive Gear | 1 | N/A |
| 15 | E-Clip | 2 | QW120-01 | 46b | Pinion Gear | 1 | N/A |
| 16 | Rotor | 1 | VAA009-02 | 47 | Drive Gear Adjust Washer | 1 | BAA105-04 |
| 17 | Kick Lever | 1 | VAA019-01 | 48 | Sidcover Assembly | 1 | UAA323-03 |
| 18 | Bail Actuator | 1 | BAA031-01 | 49 | Sidcover Screw "B" - M2.6 x 6mm | 1 | UAA050-01 |
| 19 | Bail Spring | 1 | BAA022-01 | 50 | Sidcover Screw "A" - M2.6 x 8mm | 2 | UAA057-02 |
| 20 | Arm Lever Cover | 1 | VAA087-02 | 51 | O/S Gear Bearing | 1 | CT157-02 |
| 21 | Arm Lever Cover Screw | 1 | CW125-02 | 52 | O/S Gear Assembly | 1 | UAA353-01 |
| 22 | Line Roller Screw | 1 | BAA108-02 | 53 | O/S Slider | 1 | UAA025-01 |
| 23 | Arm Lever | 1 | UAA007-01 | 54 | Main Shaft Screw | 1 | BAA100-01 |
| 24 | Line Roller Collar | 1 | CAA102-01 | 55 | Trip Ramp | 1 | UAA119-01 |
| 25 | Line Roller Washer | 1 | BAA102-01 | 56 | Trip Ramp Screw | 1 | UAA123-04 |
| 26 | Line Roller | 1 | BAA004-02 | 57 | Handle Assembly (Includes 57a) | 1 | VAA318-02 |
| 27 | Line Roller Ball Bearing | 1 | GH202-01 | 57A | Handle Knob Cap | 1 | BB115-02 |
| 28 | Bail Assembly | 1 | VAA347-01 | 58 | O-Ring | 1 | UAA101-01 |
| 29 | Rotor Adjust Washer | 1 | BAA110-02 | 59 | O-Ring | 1 | VAA101-01 |
| 30 | Clutch Bearing Cap | 1 | UAA040-03 | 60 | Clutch Tool - TO REMOVE C LUTCH CAP | 1 | UAA3113-01 |